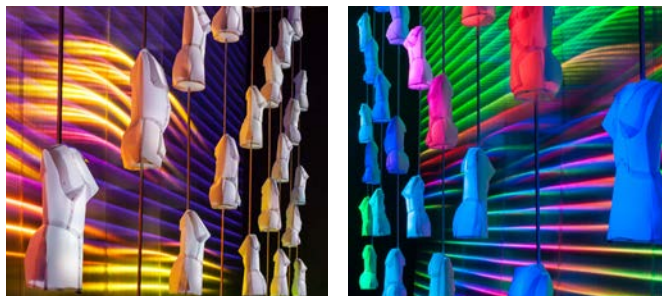


Photography © Wolf-Dieter Gericke

SHOWCASE

Heldendisplay Museum Leipzig – Leipzig, Germany



Germany celebrates composer Richard Wagner's 200th bicentennial birthday in his hometown which hosts an annual festival of the musician's work with "Wagner Hero Display" at the Museum of Fine Arts in Leipzig. As part of the "World Creators" light exhibition, German artist Atelier Rosalie stages a monumental kinetic interactive light and sound sculpture in memory of Wagner's masterpiece "The Nibelungen Legend". An elaborate vision of heroes and gods, the installation expresses the music and hero figures of Wagner's classical opera "Ring of the Nibelung" in contemporary form with motional light fibers and colours. To conceive the artistic lighting design, Traxon Dot XL-9 fixtures are placed in the stylized sculptures, and customized Traxon Dot XL-3 with 300mm pixel pitch and in various lengths is installed behind the patented plate structures. Beams of dots break in several directions to give the installation a unique linear lighting effect. e:cue Lighting Control Engine mx (LCE-mx) and Butler S2 completes the composition by synchronizing dynamic RGB content to Wagner's classical opera music, producing an extraordinary experience of sight and sound for lovers of light, art and music.

FEATURED PRODUCTS



Dot XL-3



Dot XL-9



Butler S2



Lighting Control Engine mx (LCE mx)

METHOD OF CONTROL

PROJECT DETAILS

Category: Entertainment

Location: Leipzig, Germany

Client: City of Leipzig

Lighting Designer/Architect: Atelier Rosalie

Technical Direction/Lighting Programmer/

Installer/ ME Contractor: Neumann & Müller

Completion Date: May 2013

Traxon Technologies Europe GmbH

For more information, please visit WWW.TRAXONTECHNOLOGIES.COM

Contact: Traxon Europe E: marketing.europe@traxontechnologies.com

Traxon Technologies maintains a global presence in 68 countries throughout Asia Pacific, Europe, The Americas, Middle East, and Africa.